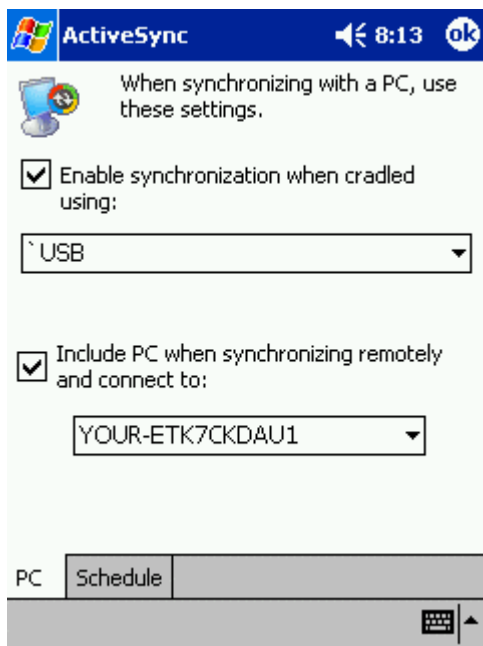


Procedure to Setup LOOX Bluetooth ActiveSync using Personal Area Network (PAN) connection with Fujitsu LIFEBOOK C6659/C6632.

1. To initiate an ActiveSync session from your desktop partner
From **My Device**→**My Services**, activate **Await ActiveSync Sessions**, when your partnership device connects through a PAN connection to your PDA, **ActiveSync** will start automatically.
2. Once the partnership is established, a reference code (example: YOUR-ETK7CKDAU1) will be generated in Pocket LOOX as shown under “**Include PC when synchronizing remotely and connect to:**” at ActiveSync screen.



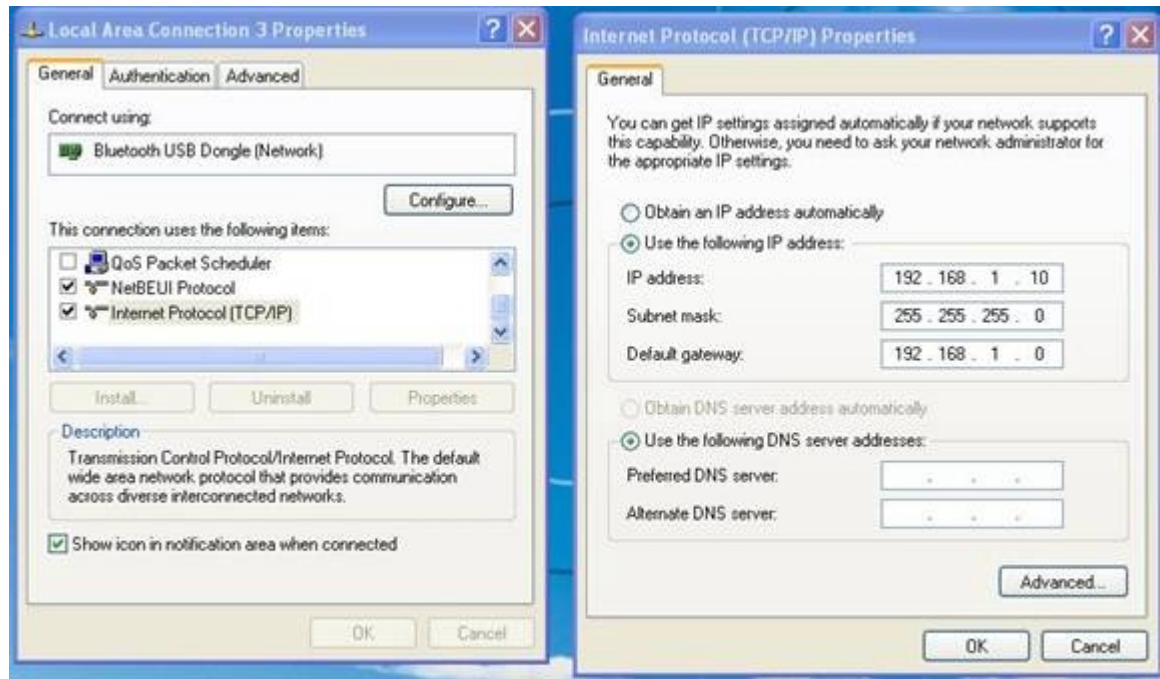
Procedure to Setup LOOX Bluetooth ActiveSync using Personal Area Network (PAN) connection with Fujitsu LIFEBOOK C6659/C6632.

3. Next, to setup the network configuration in Fujitsu LifeBook C-6659 (with built-in Bluetooth).
 - a. This applies for WinXP Home and Win XP Pro.
 - b. Install NetBEUI protocol from your LifeBook's Quick Recovery CD.
 - c. Click Install, choose **Have disk**.
 - d. Browse QRCD→Valueadd→MSFT→NE



Procedure to Setup LOOX Bluetooth ActiveSync using Personal Area Network (PAN) connection with Fujitsu LIFEBOOK C6659/C6632.

- e. Set the IP address as shown:



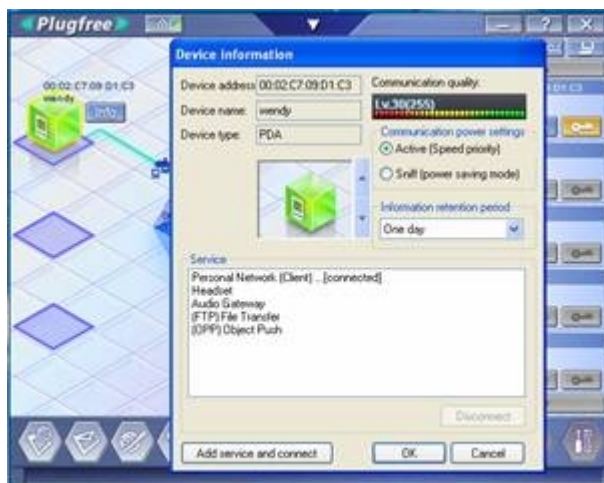
4. Next, configure the PlugFree Utility on your Fujitsu LifeBook C-6659.
(Note : Pls use Bluetooth Plugfree Utility Version 2.0, available for download at our Fujitsu Website (http://www.fujitsu-pc-asia.com/techsupp/lb_ut_opdrv.htm).
- a. Once the PlugFree utility software is activated, click the **device search** and it will automatically search for Pocket LOOX. The system will then prompt for a Passkey once Pocket LOOX is detected. Enter the same **Passkey** used for Pocket LOOX.

Procedure to Setup LOOX Bluetooth ActiveSync using Personal Area Network (PAN) connection with Fujitsu LIFEBOOK C6659/C6632.

- b. Click the PDA icon as shown, followed by **Personal Networking**.

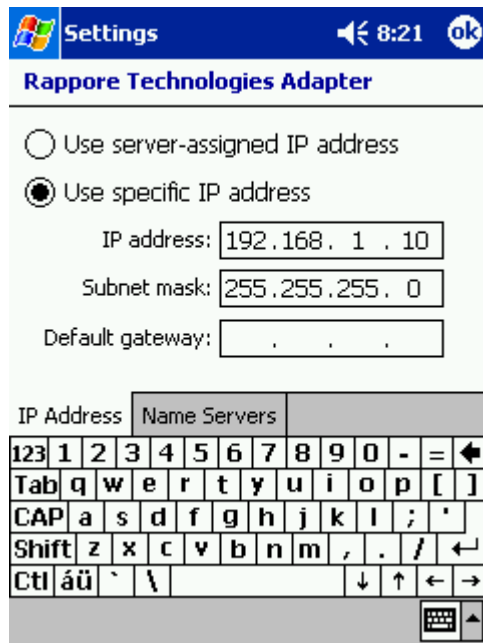


- c. Select Info and the Device Information window will appear.



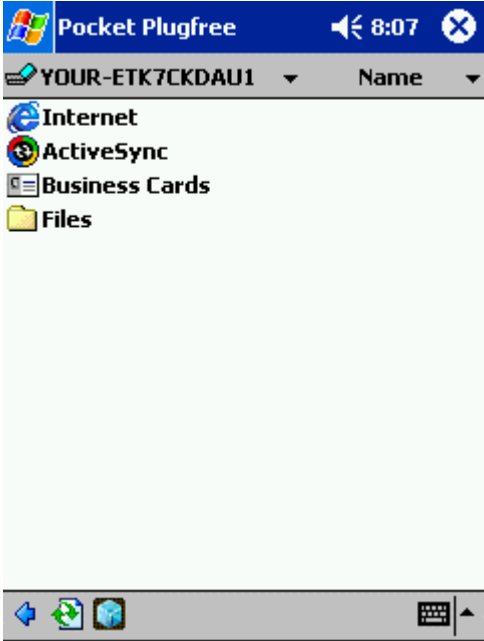
Procedure to Setup LOOX Bluetooth ActiveSync using Personal Area Network (PAN) connection with Fujitsu LIFEBOOK C6659/C6632.

5. Next, setup the Network Configuration on Pocket LOOX.
 - a. Tap **Start**→ **Setting**→ **Connections**→**Network Adapters**→**Rapport Technologies** and set the IP address as shown.

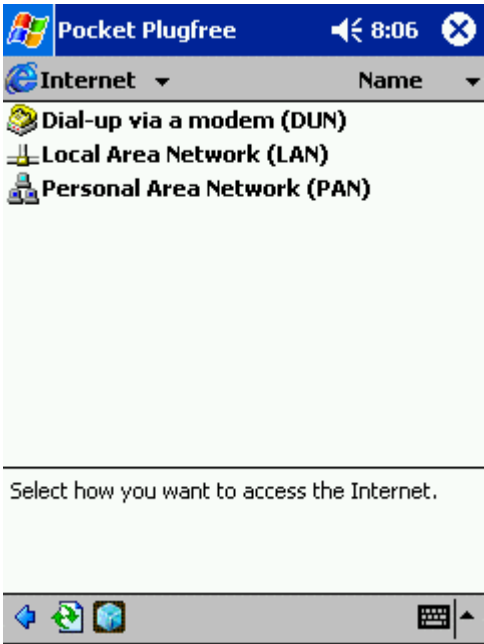


- b. Once it is done, tap OK to exit.
 - c. Tap **Start**→ **Programs**→ **PlugFree** on Pocket LOOX and your Fujitsu LifeBook C-6659 will be discovered as shown.

Procedure to Setup LOOX Bluetooth ActiveSync using Personal Area Network (PAN) connection with Fujitsu LIFEBOOK C6659/C6632.



- d. Tap on Internet and the various network services available for use will appear as shown below :



Procedure to Setup LOOX Bluetooth ActiveSync using Personal Area Network (PAN) connection with Fujitsu LIFEBOOK C6659/C6632.

- e. Finally, activate Bluetooth Synchronization between Pocket LOOX and Fujitsu LifeBook C-6659 by tapping on ActiveSync.

