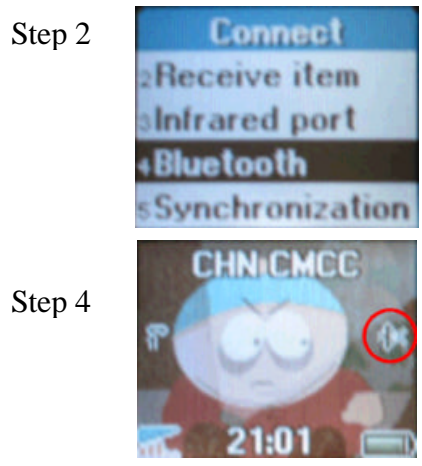
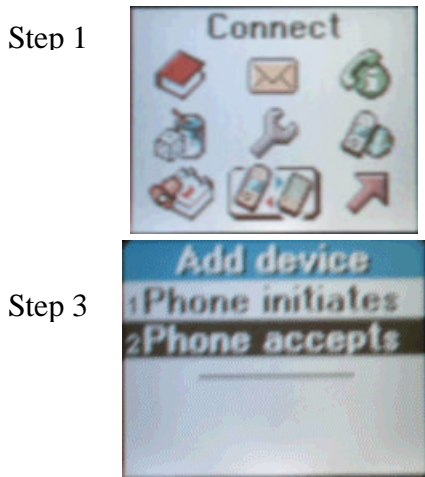

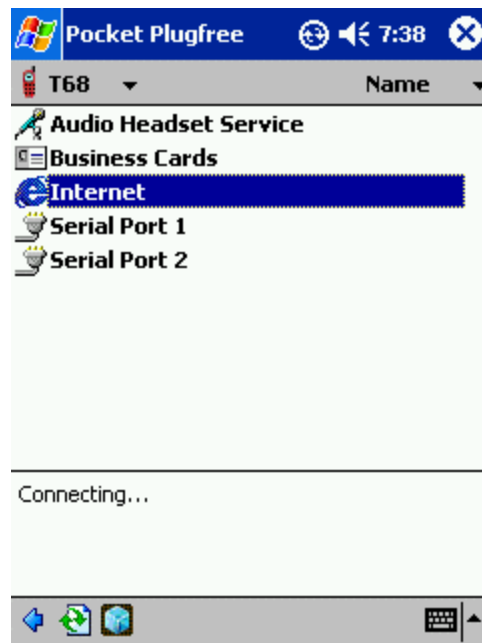
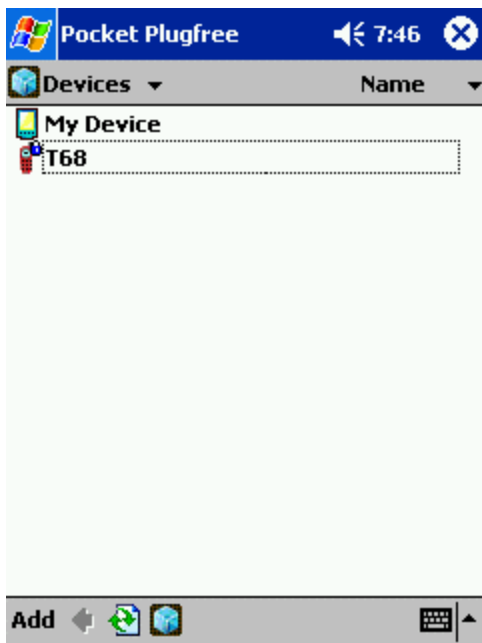


1. Initialize the Bluetooth connection on both your T68 and Pocket LOOX
2. On your T68, turn it to discoverable mode by performing the following steps:

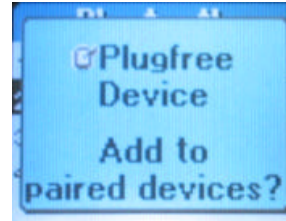
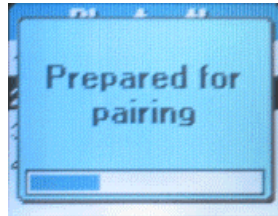
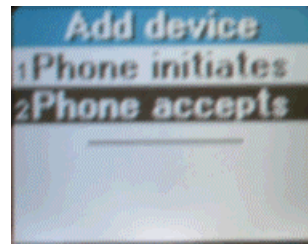
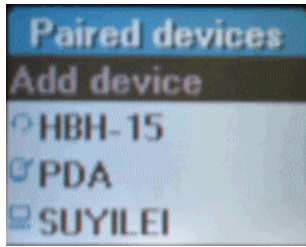


Note: A small icon as shown above (see circled icon found in Step 4 image) will appear once your T68 is in discoverable mode.

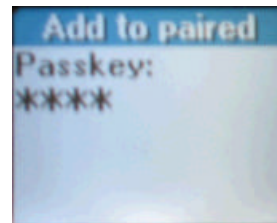
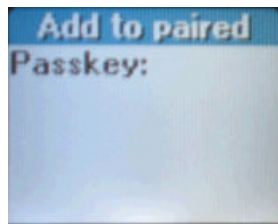
3. Click on “**Searching for Wireless Device**”  icon and the list of Bluetooth devices in the vicinity will appear. Select T68 and the Internet icon will appear as shown



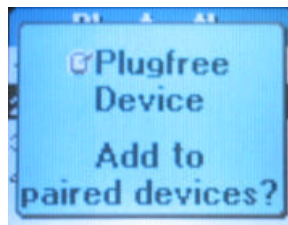
4. Add Pocket LOOX to your list of **Paired devices** on the T68



Now, press the Yes button on T68



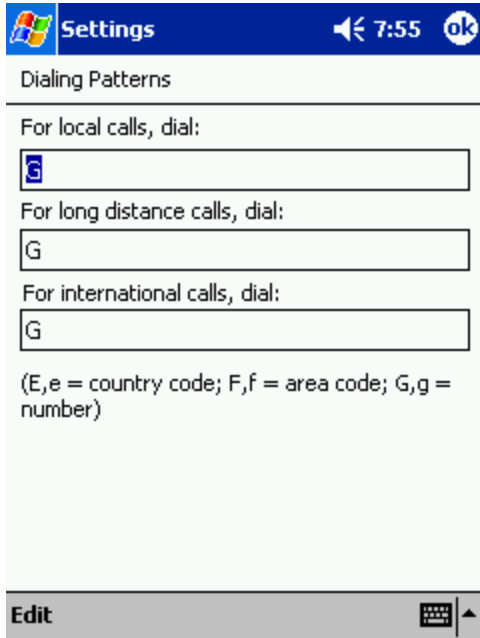
Enter any passkey on T68 then press Yes button.



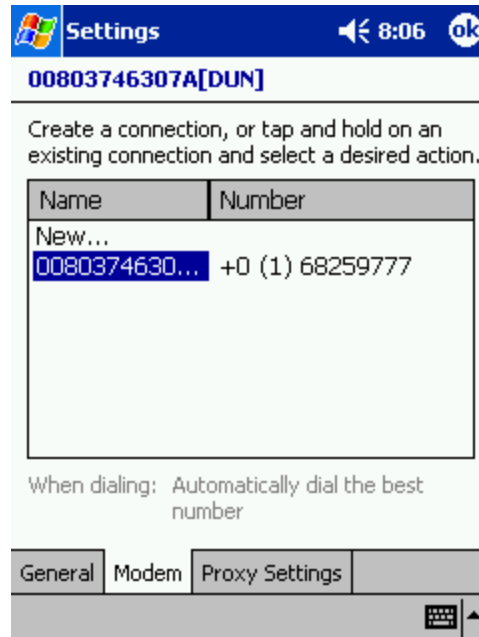
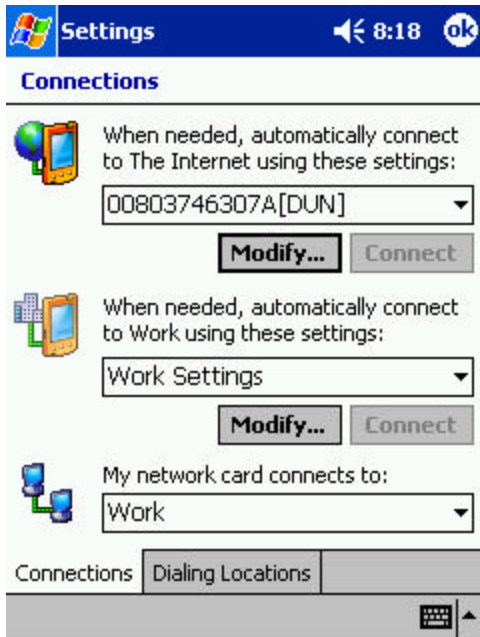
Press Yes button

On your Pocket LOOX, you will be prompted to input the passkey, which is what you just entered on your T68.

5. Go to **Start** ® **Settings**® **Connections** tab ® **Connections**® **Dialing Locations**® **Dialing Patterns** as shown. Leave G only for all settings unless you are overseas.



6. Go to **Start** ® **Settings**® **Connections** tab ® **Click Modify** as shown



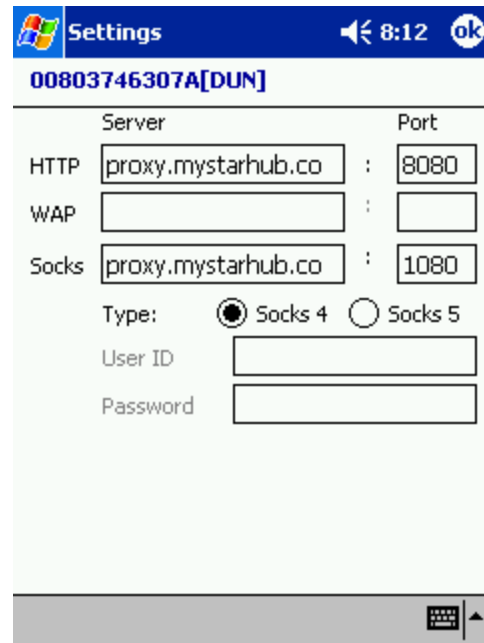
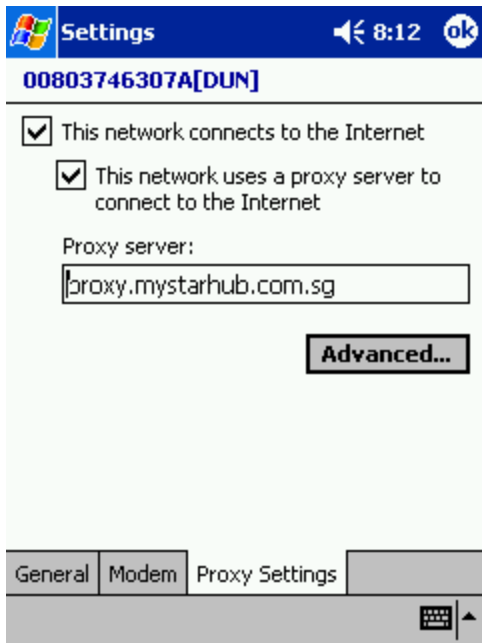
7. Go to **Proxy Settings**; check on “**This network uses a proxy server to connect to the Internet**”.

**Enter your relevant Proxy Server:**

For Starhub : proxy.mystarhub.com.sg

For Singnet : proxy.singnet.com.sg

Afterwhich, click on “**Advanced**” and enter relevant Port settings as shown below.



8. Return to your Bluetooth™ Modem page under **Start ® Program ® Pocket Plugfree**. Select **Internet** and key in your relevant ISP number (phone number)

Or you may obtain your ISP numbers from the following links:

For **Starhub** : <http://www1.starhub.net.sg/8-digit-number.shtml#4>

For **Singtel** : <http://technical.singnet.com.sg/5-digit/>

For **Pacific Net** : <http://www.pacific.net.sg/article.php?id=588>

Leave your country and area codes as “0” and “1” respectively as shown below:



9. Connection will then be established

