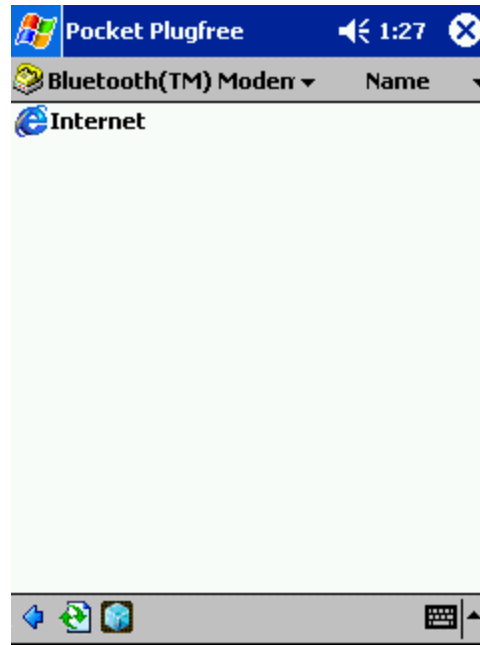
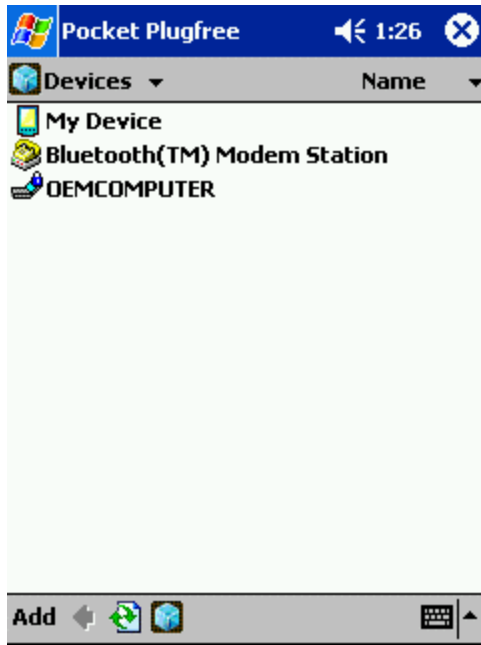
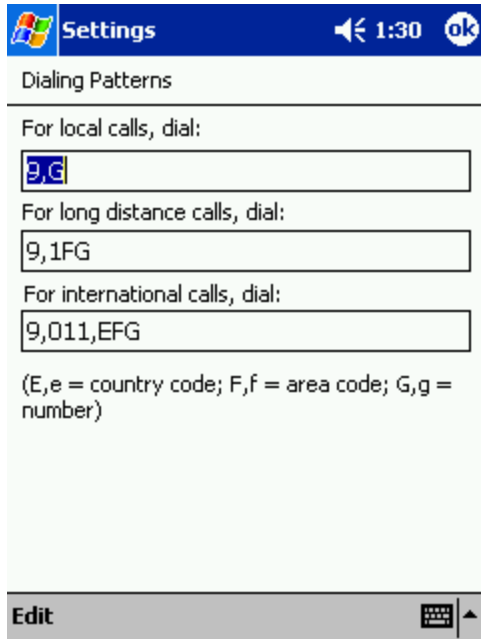


Internet Connection via Bluetooth Modem Station

1. Click on “**Searching for Wireless Device**”  icon and the list of Bluetooth devices in the vicinity will appear. Select **Bluetooth™ Modem** and the Internet icon will appear as shown

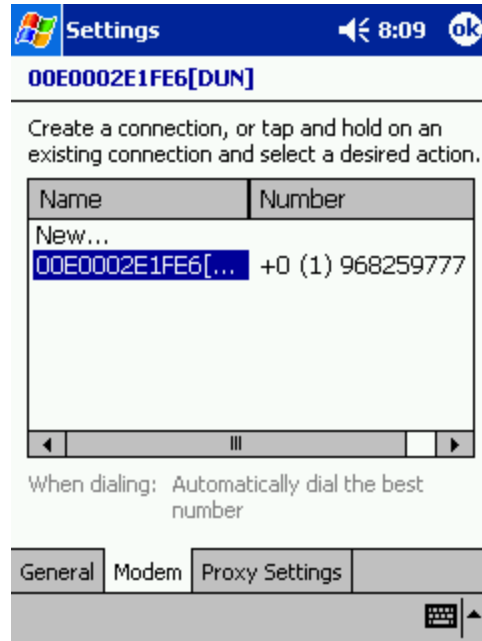
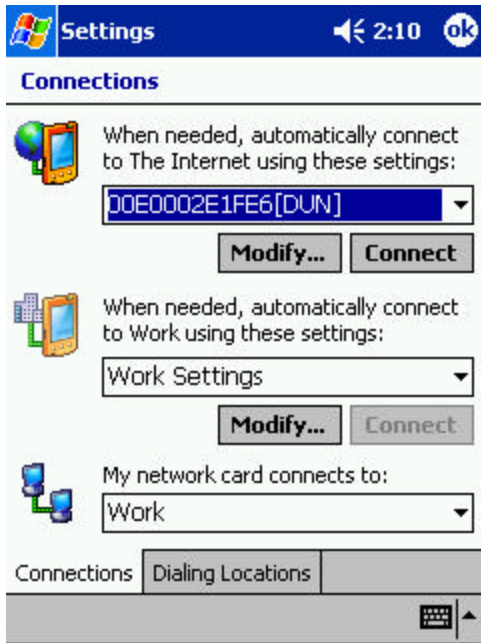


2. Go to **Start @ Settings @ Connections tab @ Connections @ Dialing Locations @ Dialing Patterns** as shown. Leave only G for all the settings unless you are overseas



Internet Connection via Bluetooth Modem Station

3. Go to **Start** → **Settings** → **Connections tab** → Click **Modify** as shown



4. Go to **Proxy Settings**; check on “**This network uses a proxy server to connect to the Internet**”.

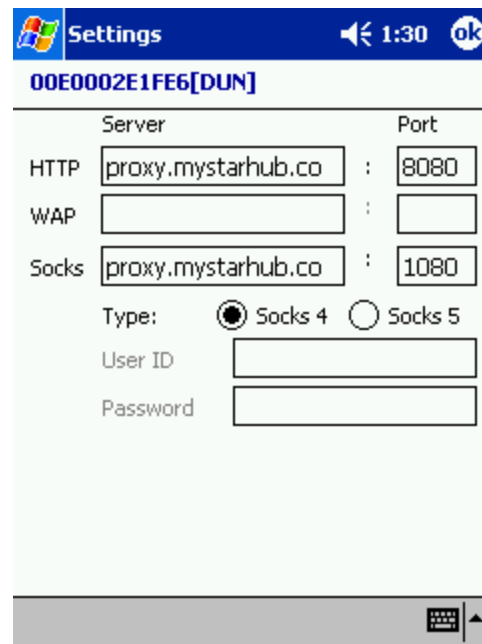
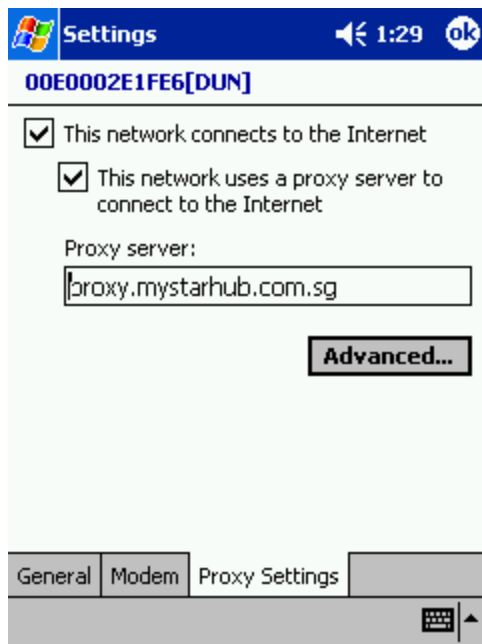
Enter your relevant Proxy Server:

For Starhub : proxy.mystarhub.com.sg

For Singnet : proxy.singnet.com.sg

Afterwhich, click on “**Advanced**” and enter relevant Port settings as shown below.

Internet Connection via Bluetooth Modem Station



5. Return to your Bluetooth™ Modem page under **Start ® Program ® Pocket Plugfree**. Select **Internet** and key in your relevant ISP number (phone number)

Or you may obtain your ISP numbers from the following links:

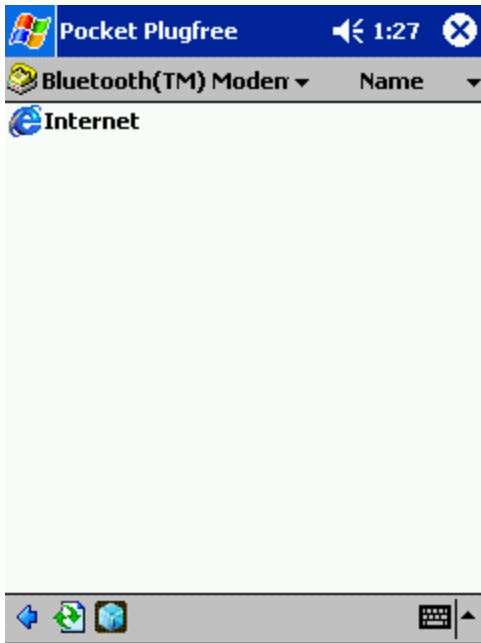
For **Starhub** : <http://www1.starhub.net.sg/8-digit-number.shtml#4>

For **Singtel** : <http://technical.singnet.com.sg/5-digit/>

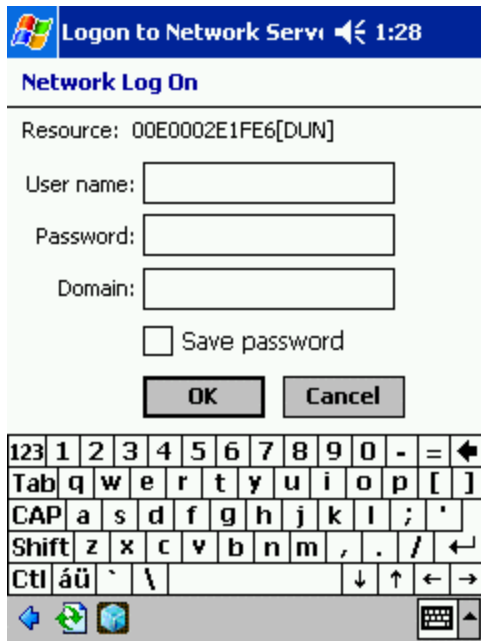
For **Pacific Net** : <http://www.pacific.net.sg/article.php?id=588>

Leave your country and area codes as “0” and “1” respectively as shown below:

Internet Connection via Bluetooth Modem Station



6. When the **Network Log On** screen appears, enter your ISP username and password accordingly



Internet Connection via Bluetooth Modem Station

7. Connection will then be established

