
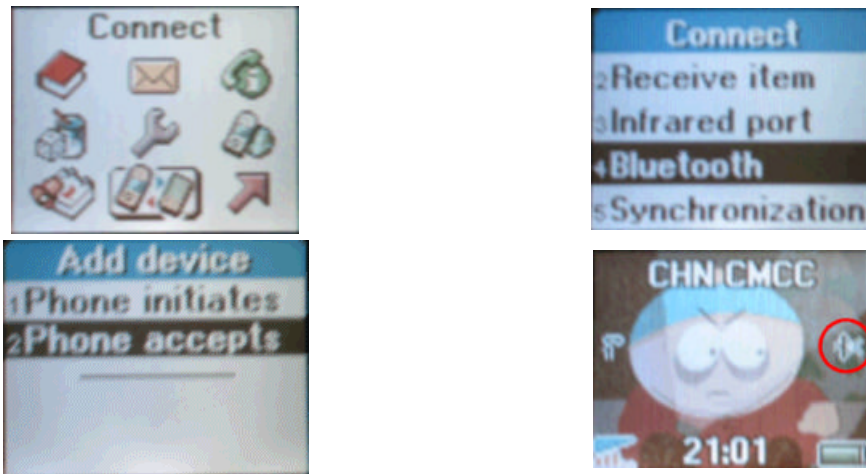


GPRS Connection via Bluetooth using Singtel (e-ideas)

	<p><u>GPRS Setting on T68</u></p> <ol style="list-style-type: none"> 1. Under T68 choose Connect 2. Select Data Comm 3. Select Data accounts- GPRS 4. Choose Edit 5. Select APN, Enter Internet 6. Select User ID, Enter User ID as per your Mobile Phone no.>eg. 6591234567 7. Select Password, Enter your Password (e-ideas account password) 8. Take note of your CID number
---	--

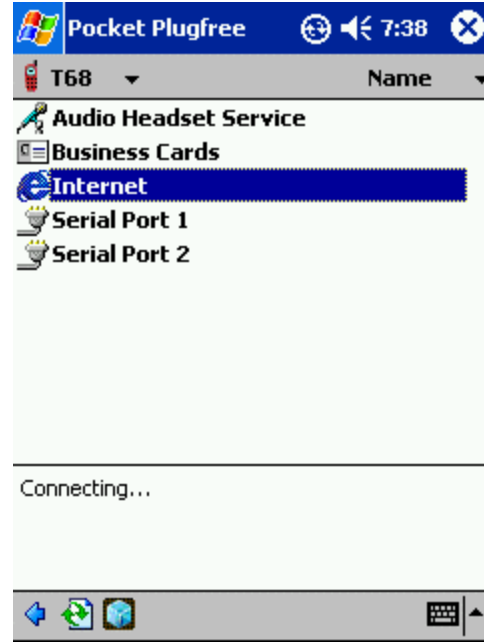
On your mobile phone, turn it to discoverable mode by performing the following steps:



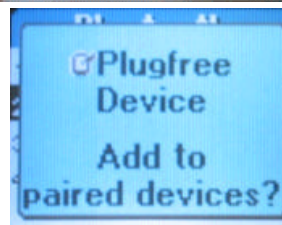
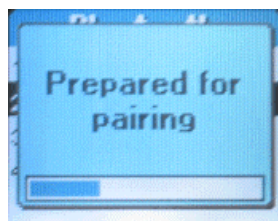
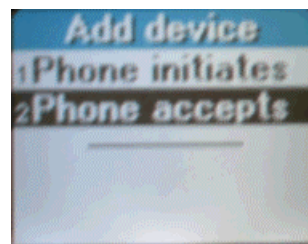
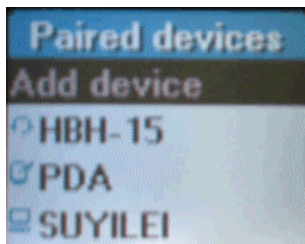
Note: A small icon as shown above (see circled icon found in the above image) will appear once your T68 is in discoverable mode.

GPRS Connection via Bluetooth using Singtel (e-ideas)

Click on “**Searching for Wireless Device**”  icon and the list of Bluetooth devices in the vicinity will appear. Select T68 and the list of services available will appear

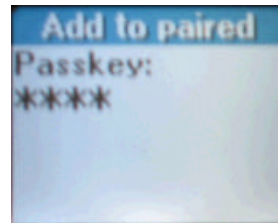
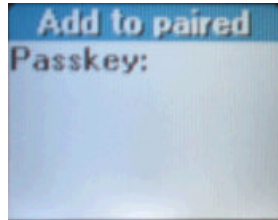


Add Pocket LOOX to your list of **Paired devices** on the T68

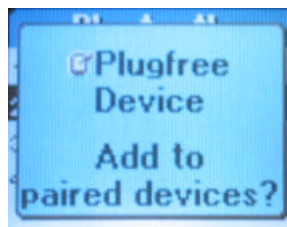


Now, press the Yes button on T68

GPRS Connection via Bluetooth using Singtel (e-ideas)



Enter any passkey on T68 then press Yes button.

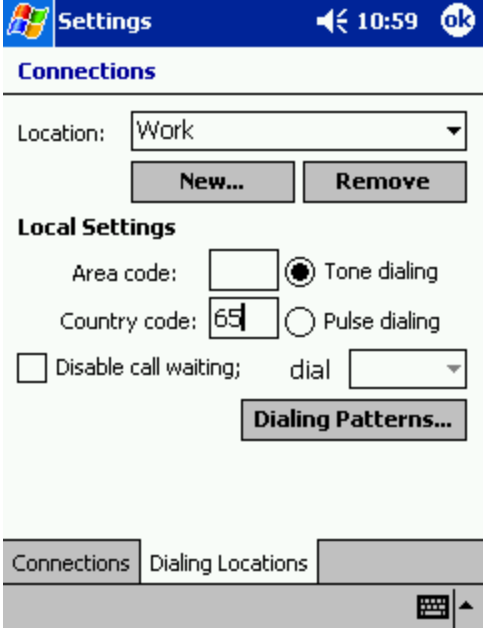
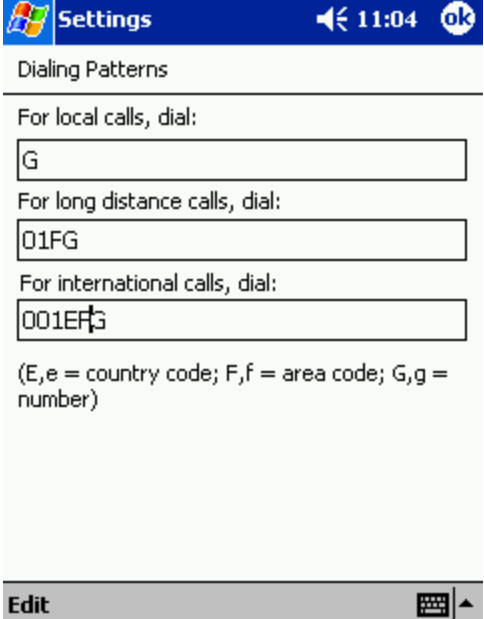


Press Yes button

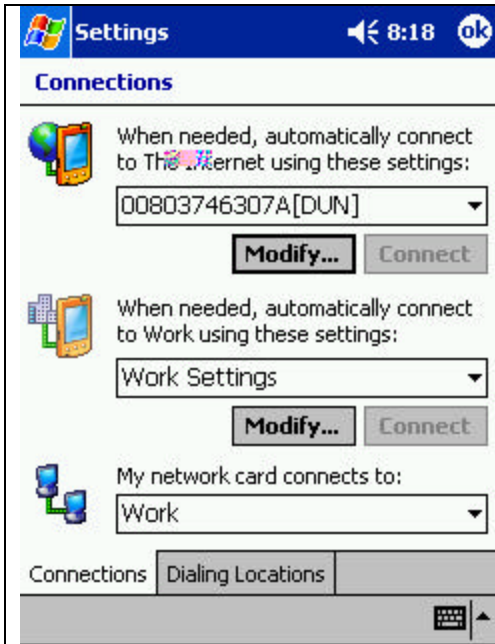
On your Pocket LOOX, you will be prompted to input the passkey, which is what you just entered on your T68.

	<p>Go to Start® Settings® Connections® Connections® Dialing Locations.</p>
--	---

GPRS Connection via Bluetooth using Singtel (e-ideas)

 <p>Settings 10:59</p> <p>Connections</p> <p>Location: Work</p> <p>New... Remove</p> <p>Local Settings</p> <p>Area code: <input type="text"/> <input checked="" type="radio"/> Tone dialing</p> <p>Country code: 65 <input type="radio"/> Pulse dialing</p> <p><input type="checkbox"/> Disable call waiting; dial <input type="text"/></p> <p>Dialing Patterns...</p> <p>Connections Dialing Locations</p>	<p>Enter Country Code : 65 Click Dialing Patterns</p>
 <p>Settings 11:04</p> <p>Dialing Patterns</p> <p>For local calls, dial: <input type="text" value="G"/></p> <p>For long distance calls, dial: <input type="text" value="01FG"/></p> <p>For international calls, dial: <input type="text" value="001EFG"/></p> <p>(E,e = country code; F,f = area code; G,g = number)</p> <p>Edit</p>	<p>Under Dialing Patterns, enter the following accordingly: For local Calls, dial "G" For Long Distance calls, dial "01FG" For international calls, dial "001EFG", Tap on "OK" to exit Dialing Patterns</p>

GPRS Connection via Bluetooth using Singtel (e-ideas)



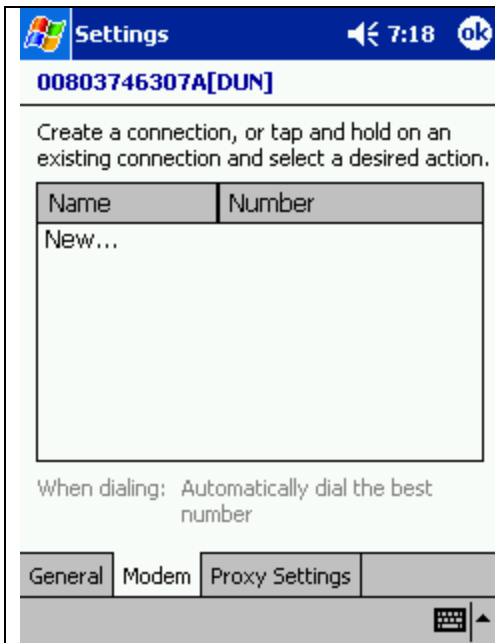
Select **Connections**

Under the section:

“When needed, automatically connect to the Internet using these settings”:

Select T68 address as shown **008038746307A[DUN]** from the drop down menu


Then tap on “**Modify**”



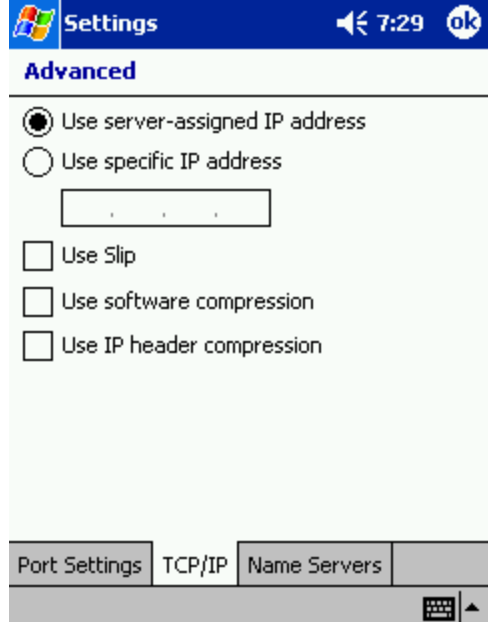
Click on **Modem**.

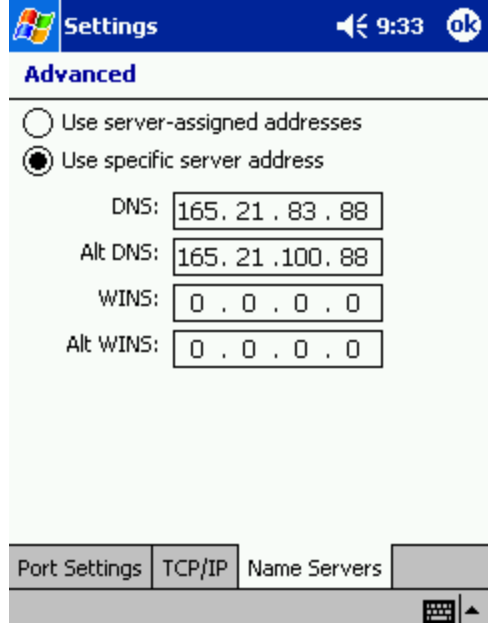
Then tap and hold on your profile. Once drop down menu appears, select **Connect**.

GPRS Connection via Bluetooth using Singtel (e-ideas)

	<p>When prompted to “Enter a name for the connection”: Select 00803746307A[DUN] (T68 address) Select 115200 for Baud rate : and then, tap on the Advanced button</p>
---	---

GPRS Connection via Bluetooth using Singtel (e-ideas)

 <p>Settings 7:29 ok</p> <p>Advanced</p> <p><input checked="" type="radio"/> Use server-assigned IP address</p> <p><input type="radio"/> Use specific IP address</p> <p><input type="text" value=" . . ."/></p> <p><input type="checkbox"/> Use Slip</p> <p><input type="checkbox"/> Use software compression</p> <p><input type="checkbox"/> Use IP header compression</p> <p>Port Settings TCP/IP Name Servers</p>	<p>Select “Use server-assigned IP address”</p> <p>Deselect Use software compression</p> <p>Deselect Use IP header compression</p> <p>Then tap on “Name Servers”</p>
--	---

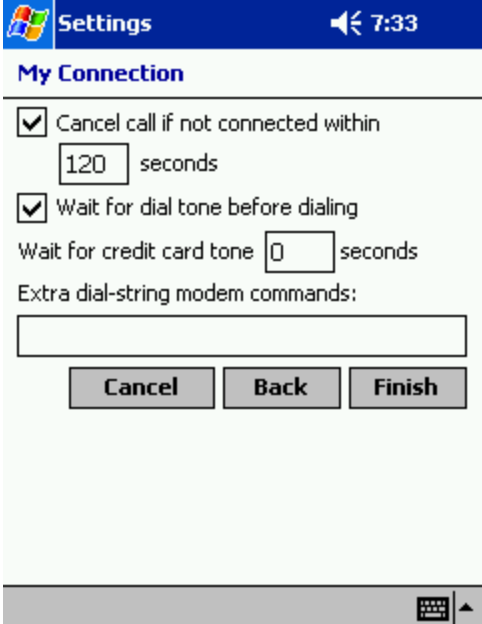
 <p>Settings 9:33 ok</p> <p>Advanced</p> <p><input type="radio"/> Use server-assigned addresses</p> <p><input checked="" type="radio"/> Use specific server address</p> <p>DNS: <input type="text" value="165.21.83.88"/></p> <p>Alt DNS: <input type="text" value="165.21.100.88"/></p> <p>WINS: <input type="text" value="0.0.0.0"/></p> <p>Alt WINS: <input type="text" value="0.0.0.0"/></p> <p>Port Settings TCP/IP Name Servers</p>	<p>Select Use specific server address:</p> <p>Under the respective sections, enter the following:</p> <p>DNS : 165.021.083.088</p> <p>Alt DNS: 165.021.100.088</p> <p>Tap “ok” to exit Advanced</p>
---	--


GPRS Connection via Bluetooth using Singtel (e-ideas)

	<p>Tap on Next</p>
--	---------------------------

	<p>For Singapore, enter country code: 65 Leave Area code blank Enter phone number : * 99***X# Tap on Next</p> <p>Note that X is CID number which can be found in your T68 Refer to GPRS Setting of T68.</p>
--	---

GPRS Connection via Bluetooth using Singtel (e-ideas)

 <p>The screenshot shows the 'Settings' application with the 'My Connection' section. It includes checkboxes for 'Cancel call if not connected within 120 seconds' and 'Wait for dial tone before dialing'. There is also a field for 'Wait for credit card tone' set to 0 seconds and an empty text box for 'Extra dial-string modem commands'. At the bottom are 'Cancel', 'Back', and 'Finish' buttons.</p>	<p>Deselect “Wait for dial tone before dialing” Then tap on ‘Finish’</p>
---	--

 <p>The screenshot shows the 'Settings' application with the '00803746307A[DUN]' connection selected. It displays a table with columns 'Name' and 'Number'. The table contains 'New...' and 'My Connection +65 *99***1#'. Below the table, it says 'When dialing: Automatically dial the best number'. At the bottom are tabs for 'General', 'Modem', and 'Proxy Settings'.</p>	<p>Go to “Proxy Settings”</p>
---	--------------------------------------

GPRS Connection via Bluetooth using Singtel (e-ideas)

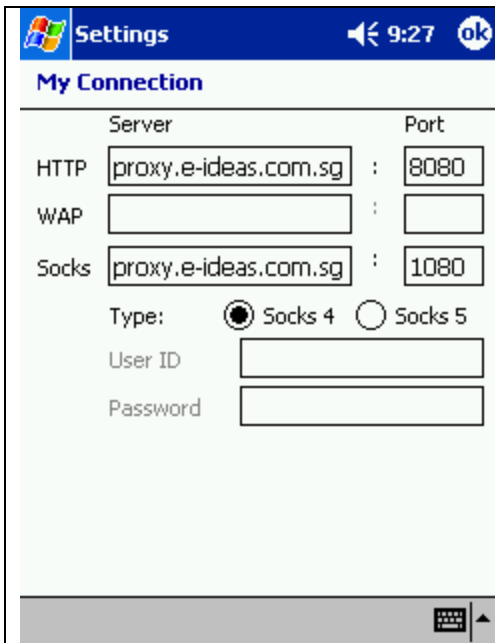


Select “**This network uses a proxy server to connect to the Internet**”

For Singtel subscribers, enter proxy server as follows:
proxy.e-ideas.com.sg

For other subscribers, please refer to your respective ISP providers for other proxy settings


Tap on **Advanced**




Under Port, enter **8080**

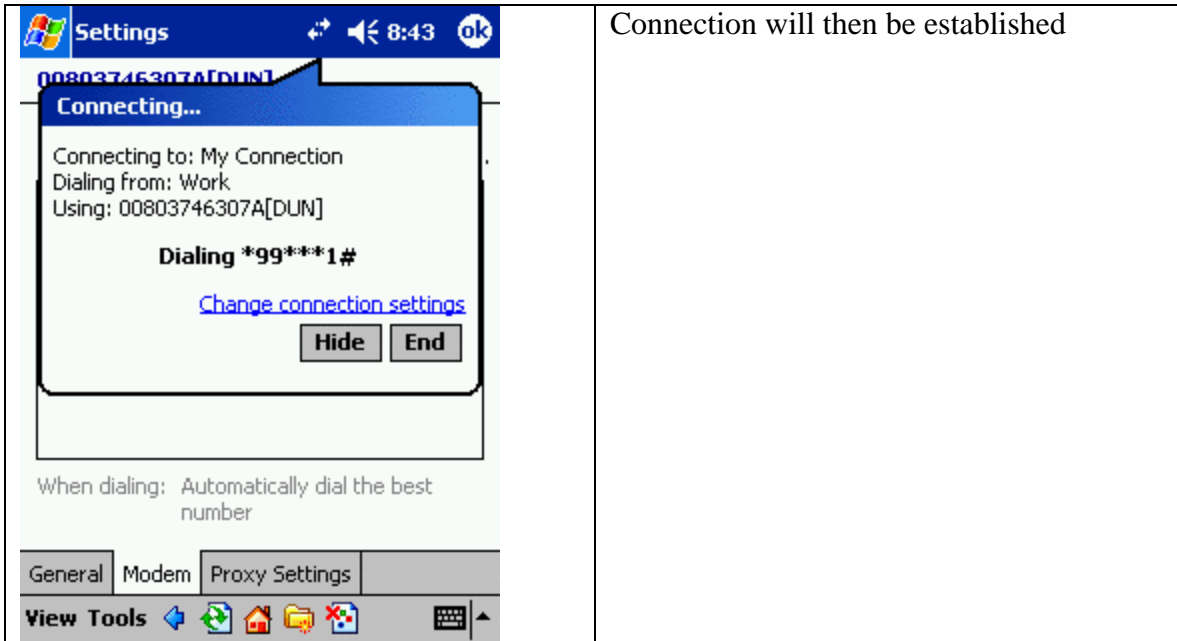
Leave the rest of the parameters as default
Tap on “**ok**” once the above is done

GPRS Connection via Bluetooth using Singtel (e-ideas)

	<p>Tap on Modem at the same time holding on to profile Once drop down menu appears, select Connect</p>
--	--

	<p>Enter your User Name as country code, followed by your phone number <country code><your Mobile Phone no.> Eg. 6598754321</p> <p>Enter your account Password (eg. e-ideas account password)</p> <p>Tap on Save password.</p>
---	--

GPRS Connection via Bluetooth using Singtel (e-ideas)



Connection will then be established