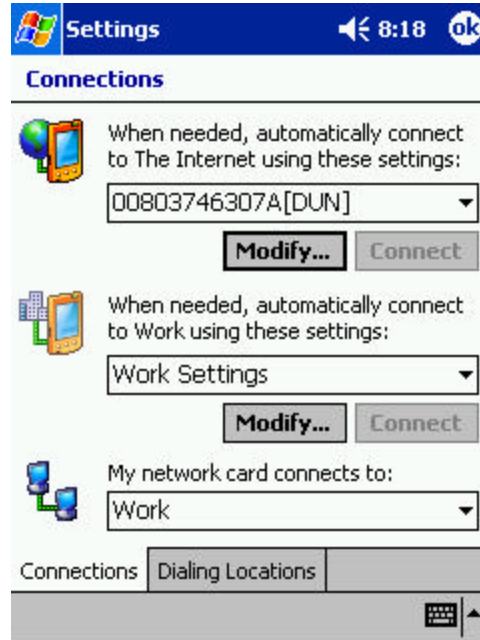
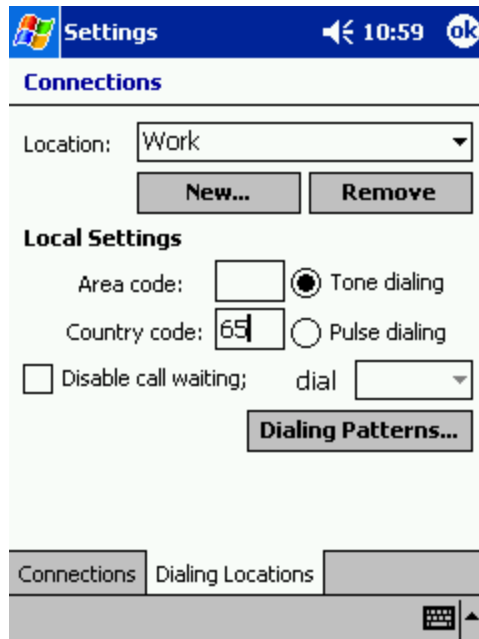


GPRS Connection via InfraRed

Go to Start® Settings® Connections® Connections® Dialing Locations.

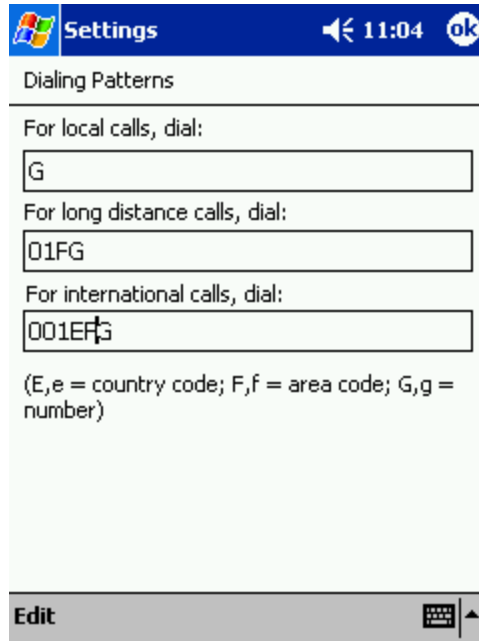


Enter **Country Code** : 65. Click **Dialing Patterns**

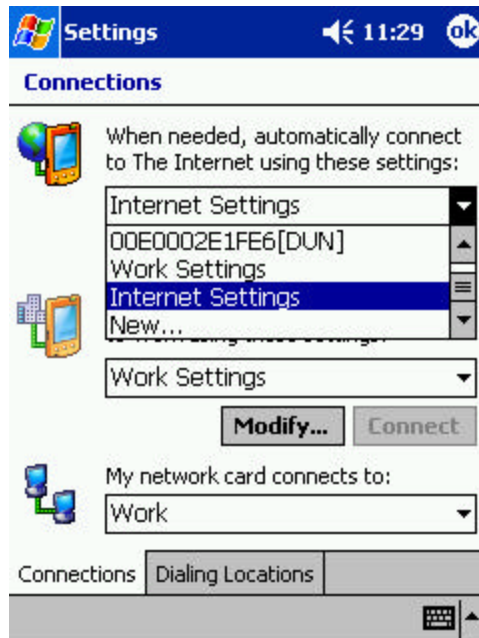


GPRS Connection via InfraRed

Under **Dialing Patterns**, enter the following accordingly: For local Calls, dial “G”
 For Long Distance calls, dial “01FG”. For international calls, dial “001EFG”, Tap on
 “OK” to exit **Dialing Patterns**



Select **Connections** > Under the section: “When needed, automatically connect to the Internet using these settings”: Select “New” from the drop down menu



GPRS Connection via InfraRed

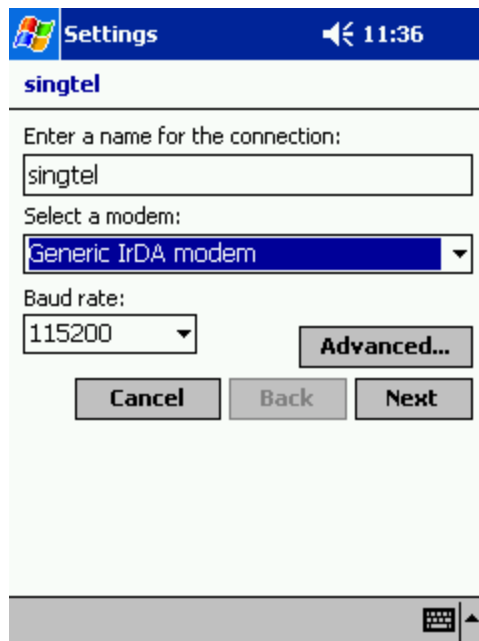
Tap on **Modem** and then **New** to establish a new connection



When prompted to “Enter a name for the connection”:

Select **Generic IrDA modem**

Select 115200 for **Baud rate** : and then, tap on the **Advanced** button



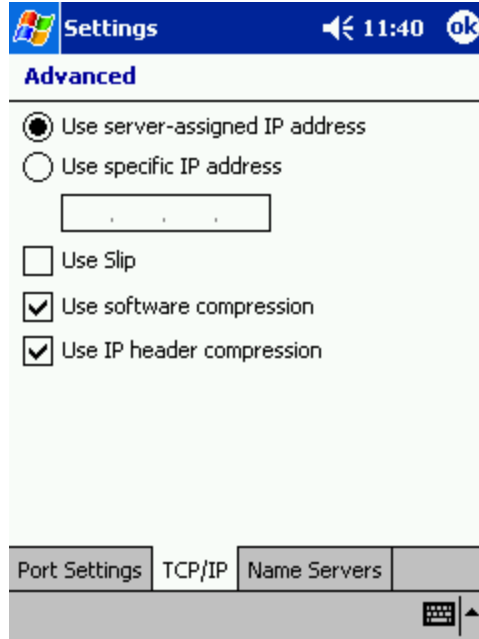
GPRS Connection via InfraRed

Select **“Use server-assigned IP address”**

Deselect **Use software compression**

Deselect **Use IP header compression**

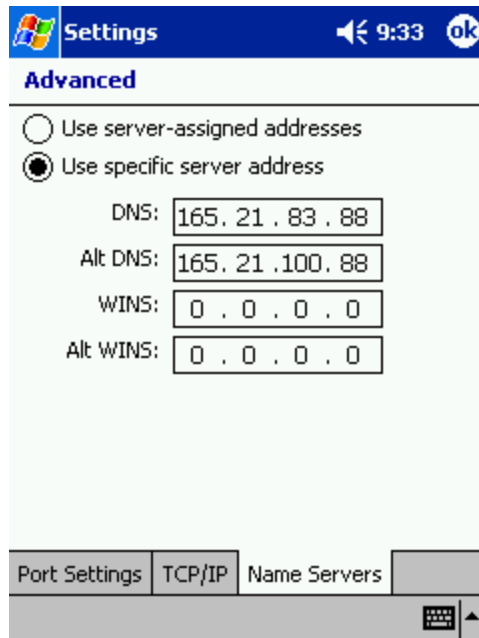
Then tap on **“Name Servers”**



Select **Use specific server address**: Under the respective sections, enter the following:

DNS : 165.021.083.088

Atl DNS: 165.021.100.088 Tap **“ok”** to exit **Advanced**



GPRS Connection via InfraRed

Tap on **Next**

Settings 11:36

singtel

Enter a name for the connection:

singtel

Select a modem:

Generic IrDA modem

Baud rate:

115200

Advanced...

Cancel Back Next

For Singapore, enter country code: 65

Leave Area code blank

Enter phone number : * 99***X#

Tap on **Next**

Settings 11:49

singtel

Country code: 65

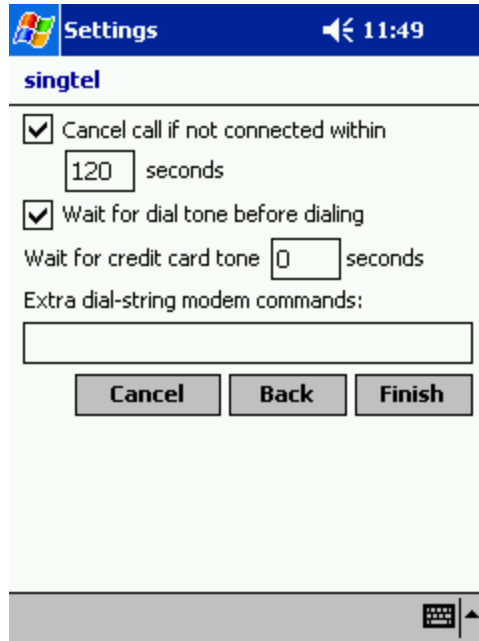
Area code:

Phone number: *99***x#

Cancel Back Next

GPRS Connection via InfraRed

Deselect “**Wait for dial tone before dialing**”
 Then tap on “**Finish**”



Go to “**Proxy Settings**”



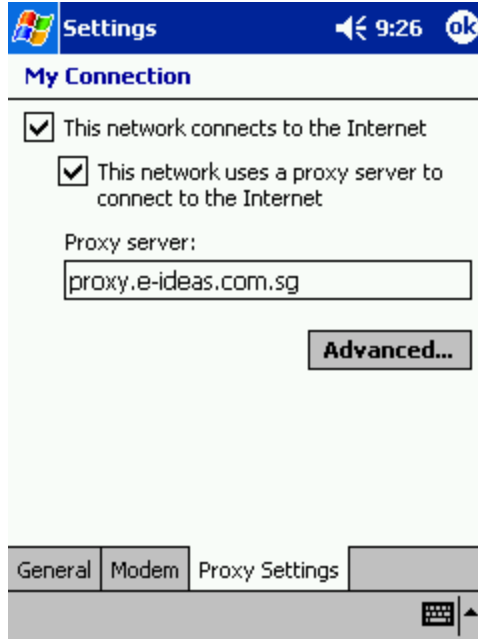
GPRS Connection via InfraRed

Select **“This network uses a proxy server to connect to the Internet”**

For Singtel subscribers, enter proxy server as follows: proxy.e-ideas.com.sg

For other subscribers, please refer to your respective ISP providers for other proxy settings.

Tap on **Advanced**



Under Port, enter **8080** Leave the rest of the parameters as default

Tap on **“ok”** once the above is done



GPRS Connection via InfraRed

Tap on **Modem** at the same time holding on to profile
 Once drop down menu appears, select **Connect**



Enter your User Name as country code, followed by your phone number
 <country code><your Mobile Phone no.> Eg. 6598754321
 Enter your account **Password** (eg. e-ideas account password)
 Tap on **Save password**.
 Align your Phone IrDA port to that of Pocket LOOX's



GPRS Connection via InfraRed

Connection will then be established

