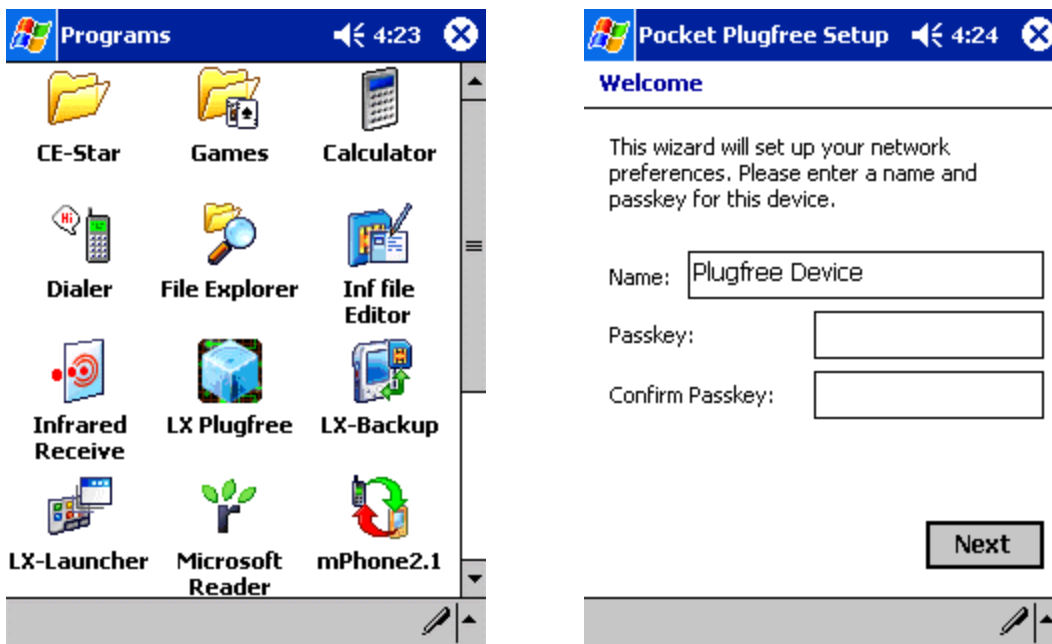


**Bluetooth Setup Instructions for mPhone on Pocket LOOX with Sony Ericsson T68i**

- [1. Setup Pocket LOOX's Bluetooth device driver](#)
- [2. Initialize Bluetooth connection between Pocket LOOX and T68](#)
- [3. Configure mPhone with Bluetooth port](#)
- [4. Phonebook download](#)

**1. Setup Pocket LOOX's Bluetooth device driver**

a) First, initialize the Pocket LOOX's Bluetooth device driver. On your Pocket LOOX, tap Start button and select Programs menu item, you will see the LX Plugfree program icon on the screen. Tap on the icon to launch it. Then follow its prompt to complete the setup.



b) Tap Next button. Enter the Bluetooth hardware testing phase. Before you tap the Test button to start the testing, please ensure you have switched on the Bluetooth trigger on your Pocket LOOX. This trigger can be found on the right side of your Pocket LOOX (see figure below).

Bluetooth Setup Instructions for mPhone on Pocket LOOX with Sony Ericsson T68i

---



Hardware Test

Setup will now verify that your wireless hardware is working correctly. Please tap Test to continue.

Skip Hardware Test

Test

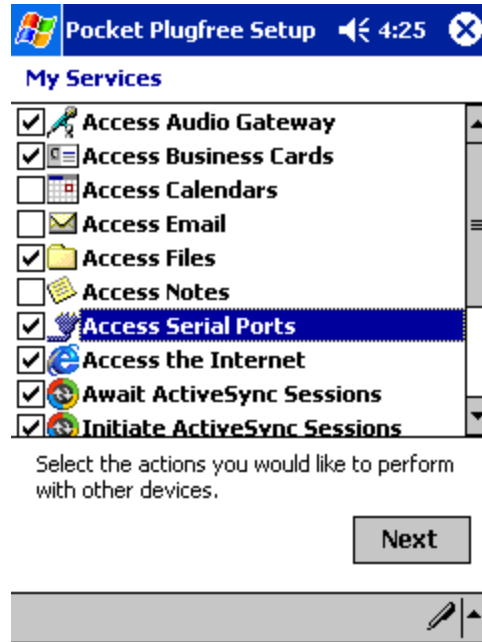
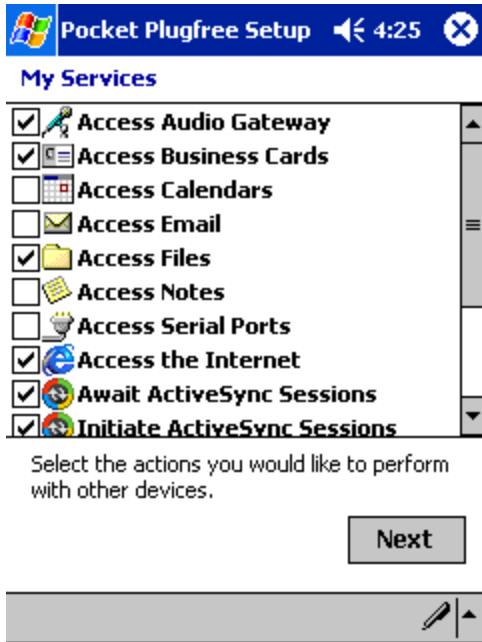


Hardware Test

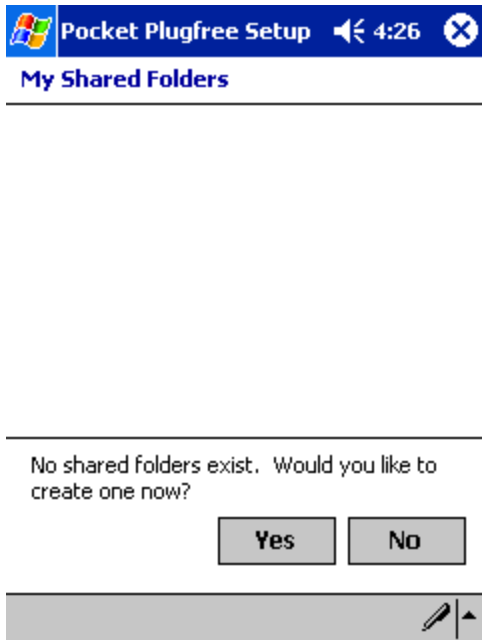
Please wait. Your wireless hardware is being tested.

c) The next screen lists all available services Pocket LOOX can provide via Bluetooth. Please check on the option "Access Serial Ports", then tap on the "Next" button.

Bluetooth Setup Instructions for mPhone on Pocket LOOX with Sony Ericsson T68i

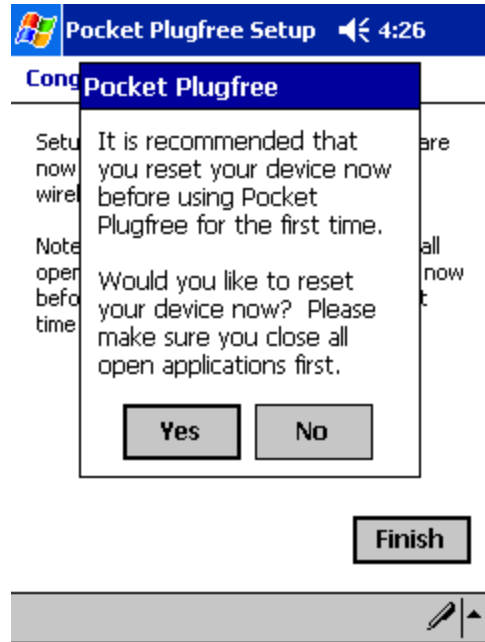
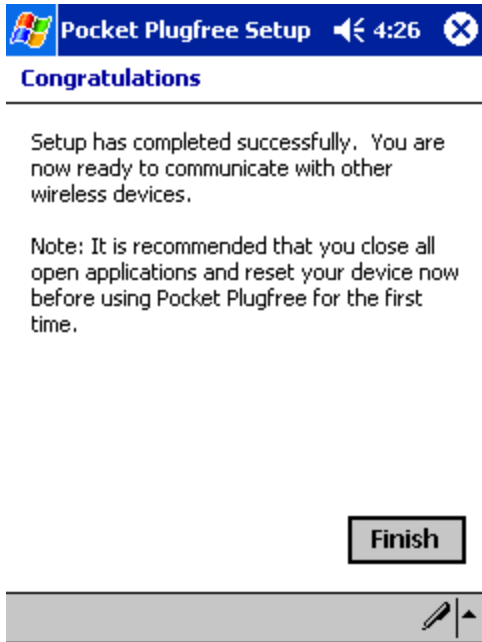


d) Now the setup will prompt you to setup the shared folders for Bluetooth services. Just tap on the “No” button to skip it.



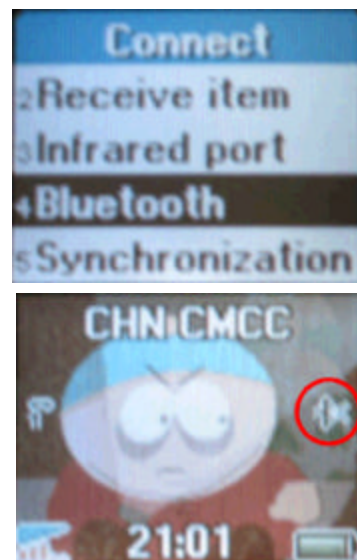
e) Now the device driver setup is finished. Tap on the “Yes” button on the message box dialog to do the soft-reset.

**Bluetooth Setup Instructions for mPhone on Pocket LOOX with Sony Ericsson T68i**



**2. Initialize Bluetooth connection between Pocket LOOX and T68**

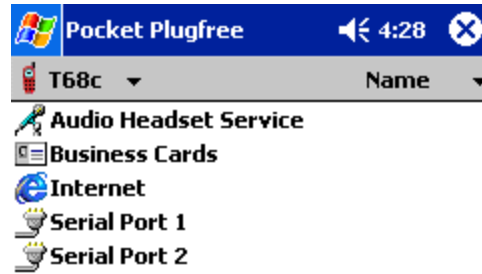
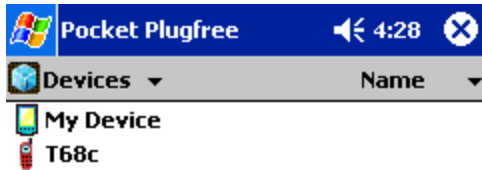
1. a) On your mobile phone, turn it to discoverable mode by performing the following steps:



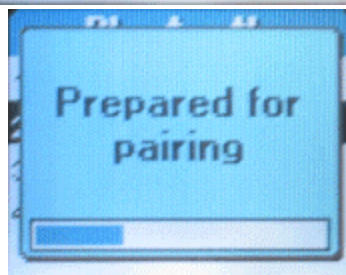
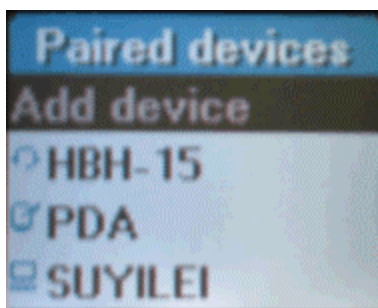
## Bluetooth Setup Instructions for mPhone on Pocket LOOX with Sony Ericsson T68i

Note: A small icon as shown above (see circled icon found in the above image) will appear once your T68 is in discoverable mode.

### b) Search for the mobile phone

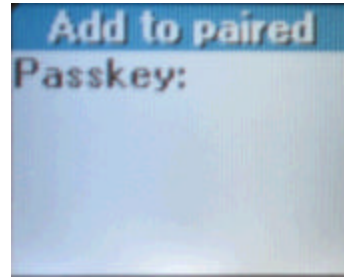


### c) Pairing



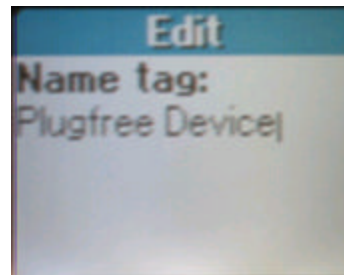
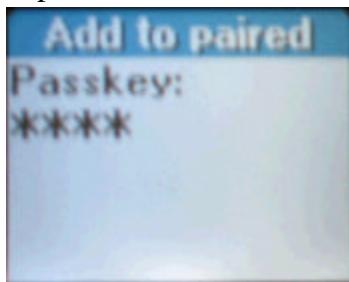
**Bluetooth Setup Instructions for mPhone on Pocket LOOX with Sony Ericsson T68i**

On your Pocket LOOX, tap on 'Serial Port 1'



Now, press the Yes button on T68

You will be prompted to enter the passkey.



Enter any passkey on T68 then press Yes button.

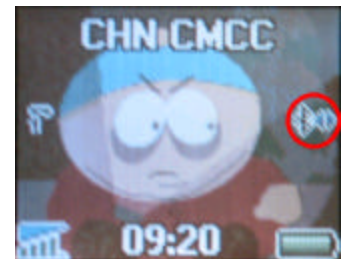
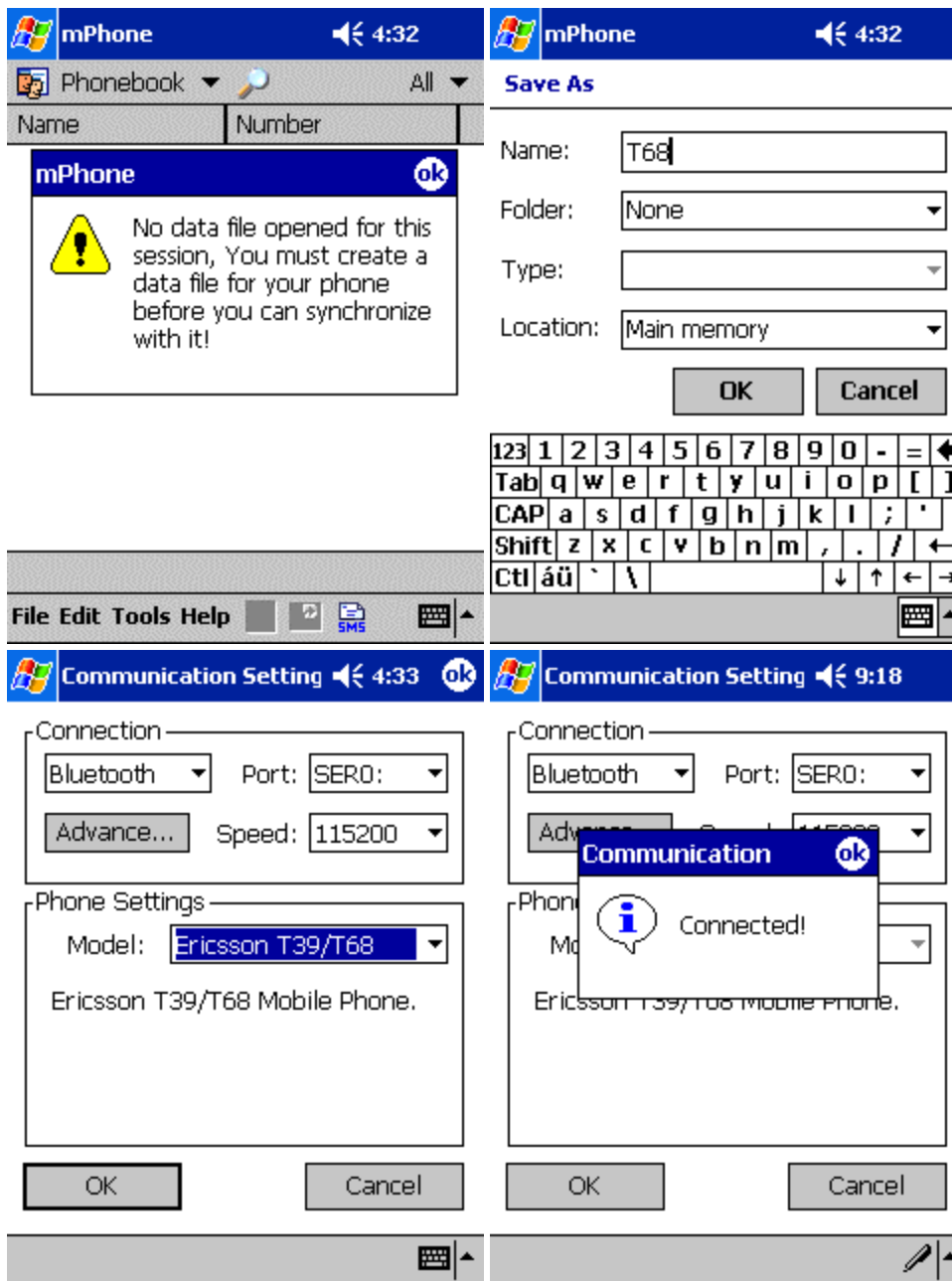
Press Yes button

On your Pocket LOOX, you will be prompted to input the passkey which is what you just entered on your T68.



Bluetooth Setup Instructions for mPhone on Pocket LOOX with Sony Ericsson T68i

3. Configure mPhone with Bluetooth port



Please note the "Connected" indicator.

**Bluetooth Setup Instructions for mPhone on Pocket LOOX with Sony Ericsson T68i**

---

**4. Phonebook download**



mPhone, the "TRUE" synchronization software for mobile phones on Pocket LOOX

Once the phonebook on T68 has been downloaded into your Pocket LOOX, tap on the number field of entry stored in phone. A small popup window will show all telephone numbers under the entry name.

Bluetooth Setup Instructions for mPhone on Pocket LOOX with Sony Ericsson T68i

---

